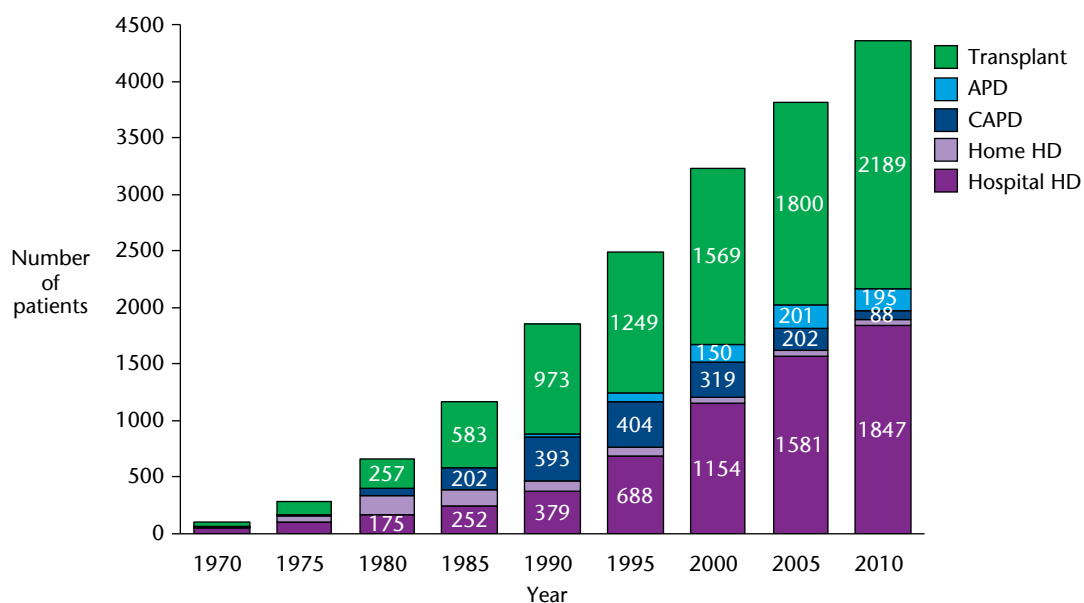


Section B PREVALENCE

B1 Patients receiving RRT in Scotland according to modality of treatment on 31 December

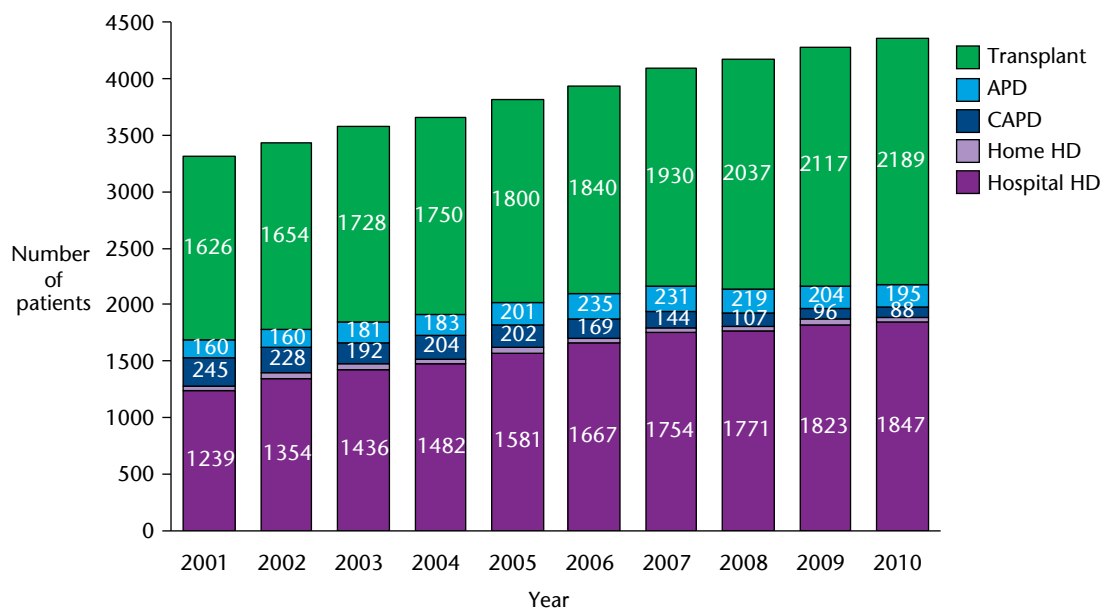
B1.1 Prevalent patients every fifth year between 1970-2010



B1.2 Prevalent patients every fifth year between 1970-2010

Year	Hospital HD	Home HD	CAPD	APD	Transplant	Total
1970	66	7	1	0	32	106
1975	103	69	2	0	119	293
1980	175	167	64	0	257	663
1985	252	138	202	0	583	1175
1990	379	94	393	17	973	1856
1995	688	78	404	78	1249	2497
2000	1154	52	319	150	1569	3244
2005	1581	43	202	201	1800	3827
2010	1847	49	88	195	2189	4368

B1.3 Prevalent patients every year between 2001-2010



B1.4 Prevalent patients every year between 2001-2010

Year	Hospital HD	Home HD	CAPD	APD	Transplant	Total
2001	1239	47	245	160	1626	3317
2002	1354	44	228	160	1654	3440
2003	1436	44	192	181	1728	3581
2004	1482	44	204	183	1750	3663
2005	1581	43	202	201	1800	3827
2006	1667	37	169	235	1840	3948
2007	1754	41	144	231	1930	4100
2008	1771	48	107	219	2037	4182
2009	1823	53	96	204	2117	4293
2010	1847	49	88	195	2189	4368

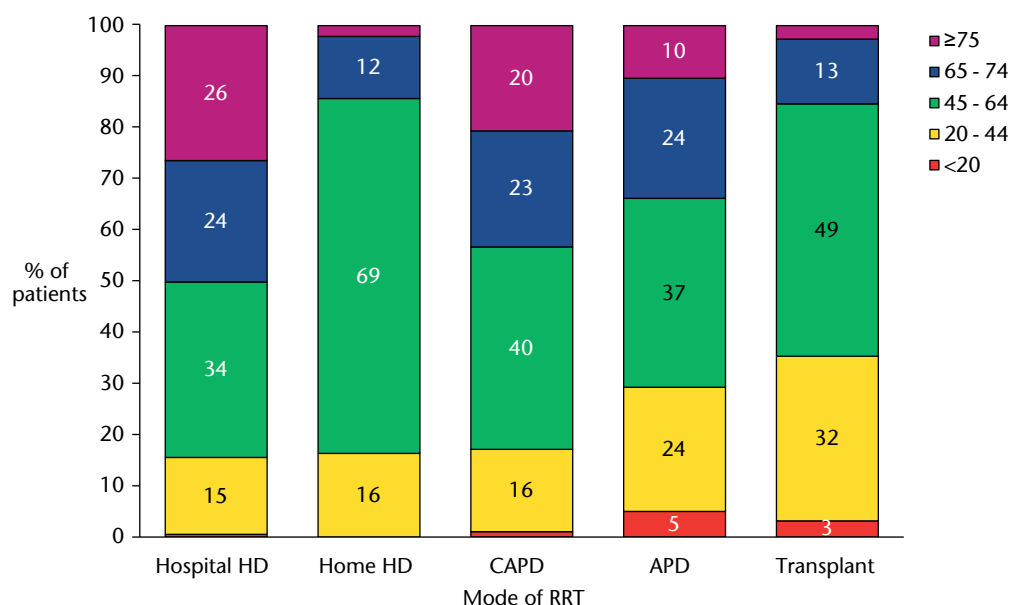
B2 Prevalent patients at each renal unit

The number of patients treated at each renal unit differs considerably. Detailed information about each renal unit is given on the SRR website: http://www.srr.scot.nhs.uk/Renal_Units/clinics.htm

B2.1 Number and percentage of patients in each age group receiving RRT at each renal unit on 31 December 2010

		ARI	XH	DGRI	GLAS	MONK	NINE	QMHD	RAIG	RHSC	RIE
≥75	Number	56	54	21	180	42	75	46	40	0	72
	%	12	19	18	12	13	20	18	17	0	10
65-74	Number	83	55	19	264	56	84	58	36	0	128
	%	17	19	16	18	17	22	23	16	0	17
45-64	Number	200	125	53	677	139	132	103	99	0	331
	%	42	44	45	45	43	34	41	43	0	45
20-44	Number	130	51	23	368	88	92	45	55	0	197
	%	27	18	19	25	27	24	18	24	0	27
<20	Number	6	0	3	13	2	0	2	2	55	9
	%	1	0	3	1	1	0	1	1	100	1
Total		475	285	119	1502	327	383	254	232	55	737
Median age		55	60	59	55	55	62	60	55	13	54
IQR		43-67	48-69	46-71	44-67	43-68	45-71	47-71	45-71	10-15	43-66

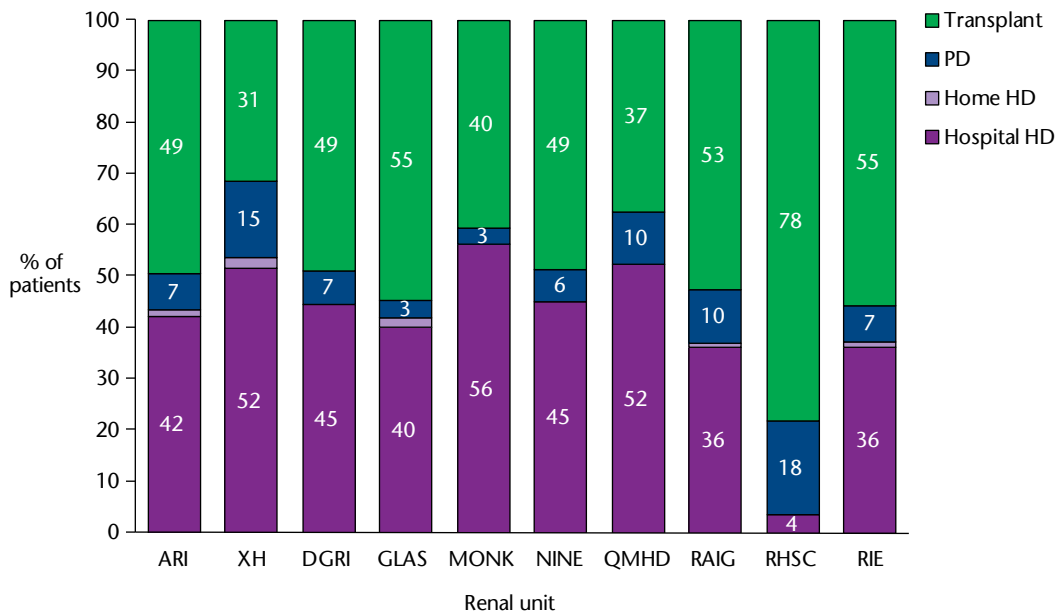
B2.2 Percentage of patients in each age group on each mode of RRT on 31 December 2010



B2.3 Number of patients, median age and age range on each mode of RRT on 31 December 2010

	Hospital HD	Home HD	CAPD	APD	Transplant	Total
≥75	487	1	18	20	60	586
65-74	437	6	20	46	274	783
45-64	637	34	35	72	1081	1859
20-44	276	8	14	47	703	1048
<20	10	0	1	10	71	92
Total	1847	49	88	195	2189	4368
Median age	65	54	60	57	50	56
Age range	3-94	23-78	19-89	2-86	4-95	2-95

B2.4 Percentage of patients on each mode of RRT at each renal unit on 31 December 2010

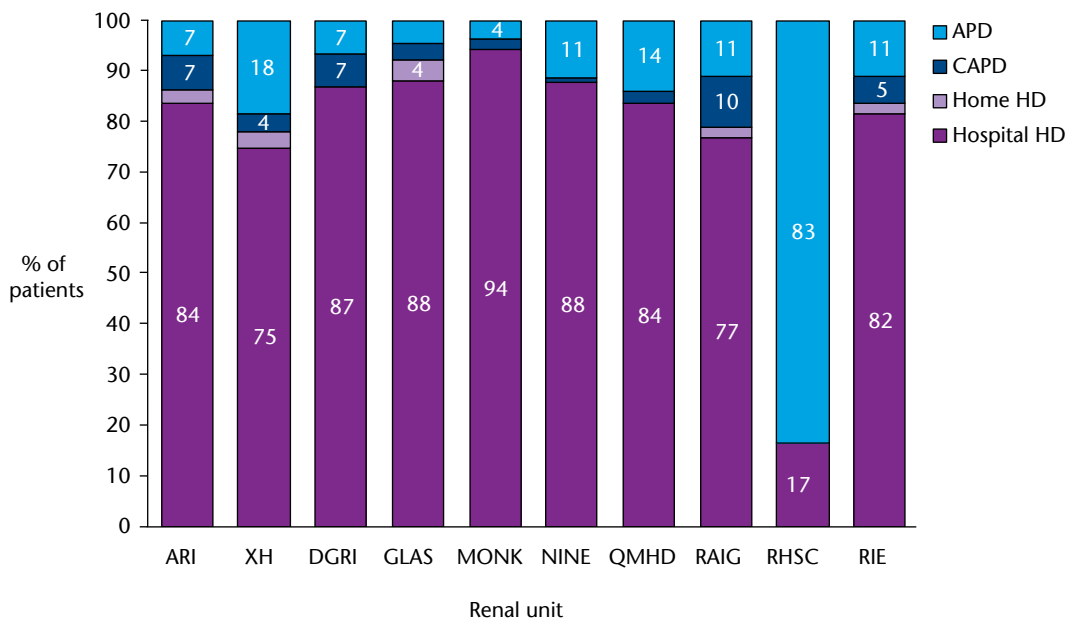


The percentage of patients on CAPD and APD have been amalgamated for clarity under one peritoneal dialysis (PD) grouping. The absolute number of patients in each renal unit using CAPD and APD are given in B2.5.

B2.5 Number of patients on each mode of RRT and renal unit providing treatment on 31 December 2010

	ARI	XH	DGRI	GRI	MONK	NINE	QMHD	RAIG	RHSC	RIE
Transplant	235	89	58	820	132	186	95	122	43	409
APD	16	36	4	30	7	22	22	12	10	36
CAPD	17	7	4	22	4	2	4	11	0	17
Home HD	6	6	0	28	0	0	0	2	0	7
Hospital HD	201	147	53	602	184	173	133	84	2	268

B2.6 Percentage of patients on each mode of RRT (excluding transplant) at each renal unit on 31 December 2010

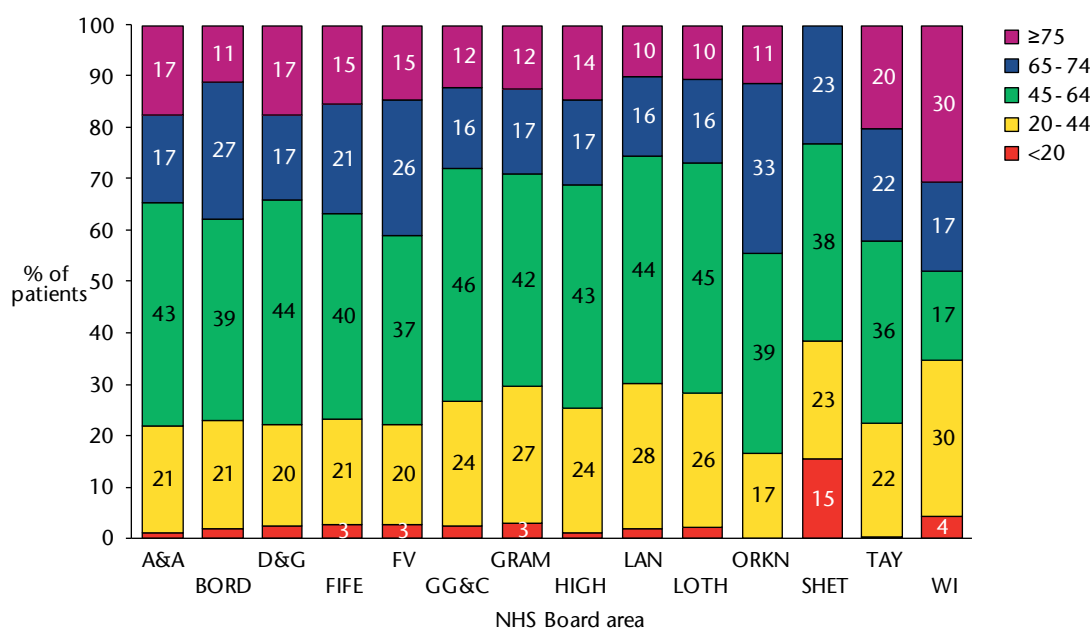


B3 Prevalent patients in each NHS Board area

Abbreviations for NHS boards are given in Appendix 1.

B3.1 Number of patients in each age group, median age and inter-quartile range by NHS Board area of residence on 31 December 2010							
NHS Board	<20	20-44	45-64	65-74	≥75	Median age	IQR
A&A	4	75	156	62	62	58	46-68
BORD	2	23	43	29	12	58	45-70
D&G	3	24	53	20	21	59	46-71
FIFE	8	62	120	64	46	58	45-69
FV	6	47	86	62	34	59	46-70
GG&C	26	253	479	166	126	54	43-66
GRAM	14	122	191	76	56	55	42-67
HIGH	3	69	123	47	41	55	44-67
LAN	9	130	203	72	46	53	41-65
LOTH	13	149	259	93	60	54	43-66
ORKN	0	3	7	6	2	60	46-71
SHET	2	3	5	3	0	57	34-64
TAY	1	81	129	79	73	61	46-72
WI	1	7	4	4	7	58	38-77

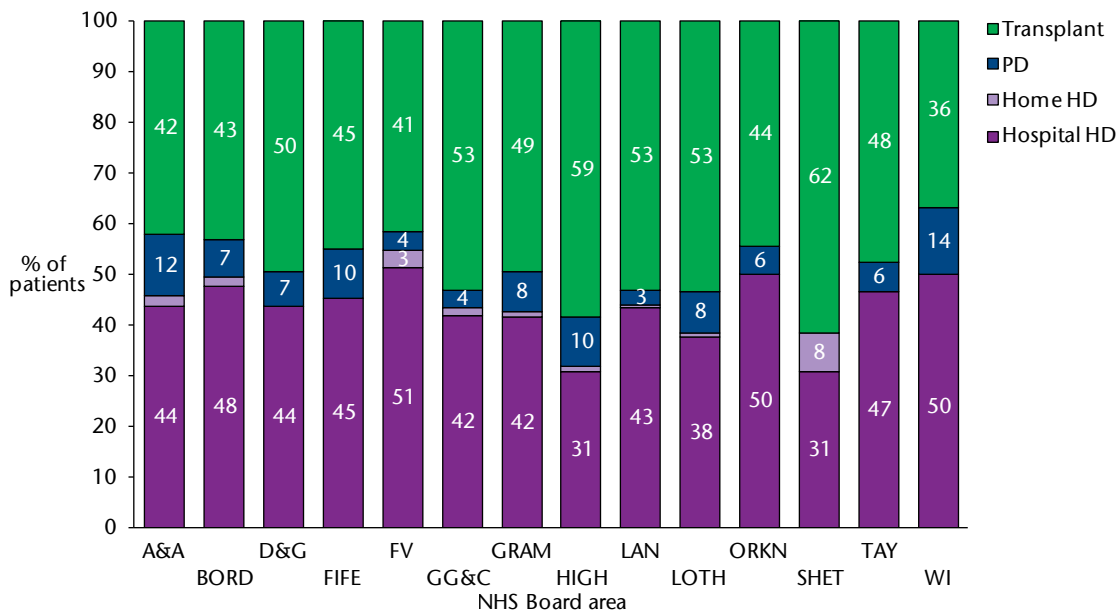
B3.2 Percentage of patients in each age group and their NHS Board area of residence on 31 December 2010



B3.3 Number of patients on each mode of RRT in each NHS Board area of residence on 31 December 2010

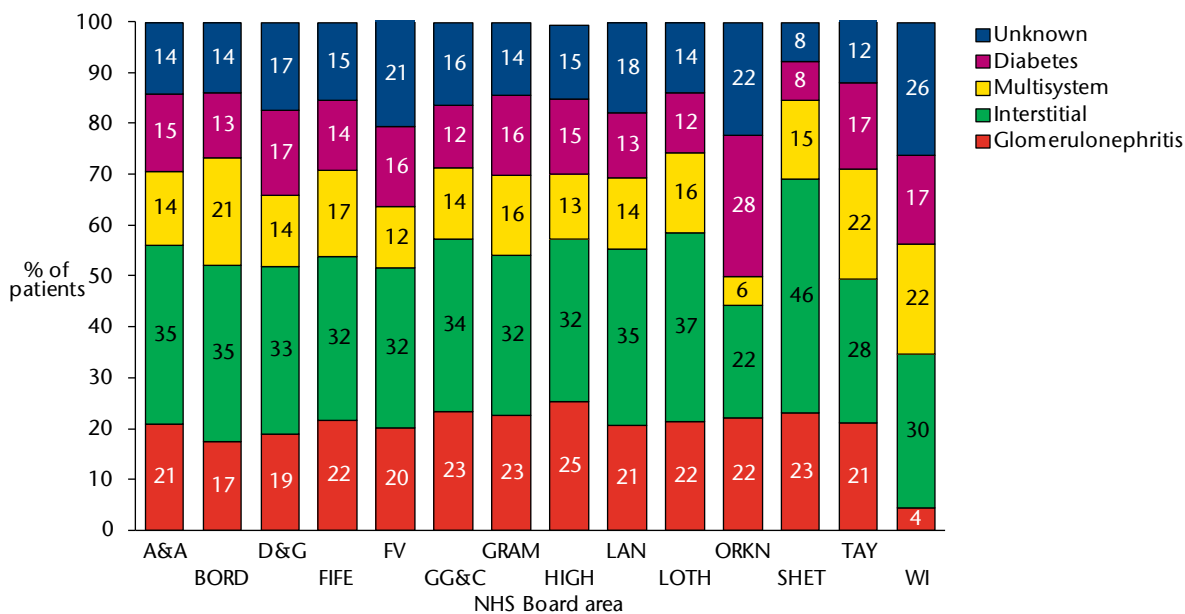
NHS Board	Hospital HD	Home HD	CAPD	APD	Transplant	Total
A&A	157	7	7	37	151	359
BORD	52	2	2	6	47	109
D&G	53	0	4	4	60	121
FIFE	136	0	4	25	135	300
FV	121	8	3	6	97	235
GG&C	442	16	11	26	555	1050
GRAM	191	5	17	19	227	459
HIGH	88	3	16	11	165	283
LAN	199	2	4	9	246	460
LOTH	215	5	15	32	307	574
ORKN	9	0	1	0	8	18
SHET	4	1	0	0	8	13
TAY	169	0	2	19	173	363
WI	11	0	2	1	8	22
Not in Scotland	0	0	0	0	2	2

B3.4 Percentage of patients on each mode of RRT in each NHS Board area of residence on 31 December 2010



The percentage of patients on CAPD and APD have been amalgamated for clarity under one peritoneal dialysis (PD) grouping. The absolute number of patients in each NHS Board area of residence using CAPD and APD are given in B3.3.

B3.5 Percentage of patients in each PRD group and their NHS Board area of residence on 31 December 2010



B3.6 Prevalence and age standardised prevalence of patients receiving RRT on 31 December 2010 by NHS Board area of residence ^R				
NHS Board	Population on 30 June 2010*	RRT population 31 December 2010	Prevalence per 100000 population	Age standardised prevalence per 100000 population ^R
A&A	366860	359	98	94
BORD	112870	109	97	91
D&G	148190	121	82	75
FIFE	364945	300	82	82
FV	293386	235	80	81
GG&C	1203870	1050	87	90
GRAMP	550620	459	83	84
HIGH	310830	283	91	86
LAN	562477	460	82	84
LOTH	836711	574	69	72
ORKN	20110	18	90	84
SHET	22400	13	58	58
TAY	402641	363	90	88
WI	26190	23	88	81
Scotland	5222100	4367	84	84

* GROS Mid-year estimates

^R B3.6 was revised in March 2012 to correct an error in the age-standardisation methodology.

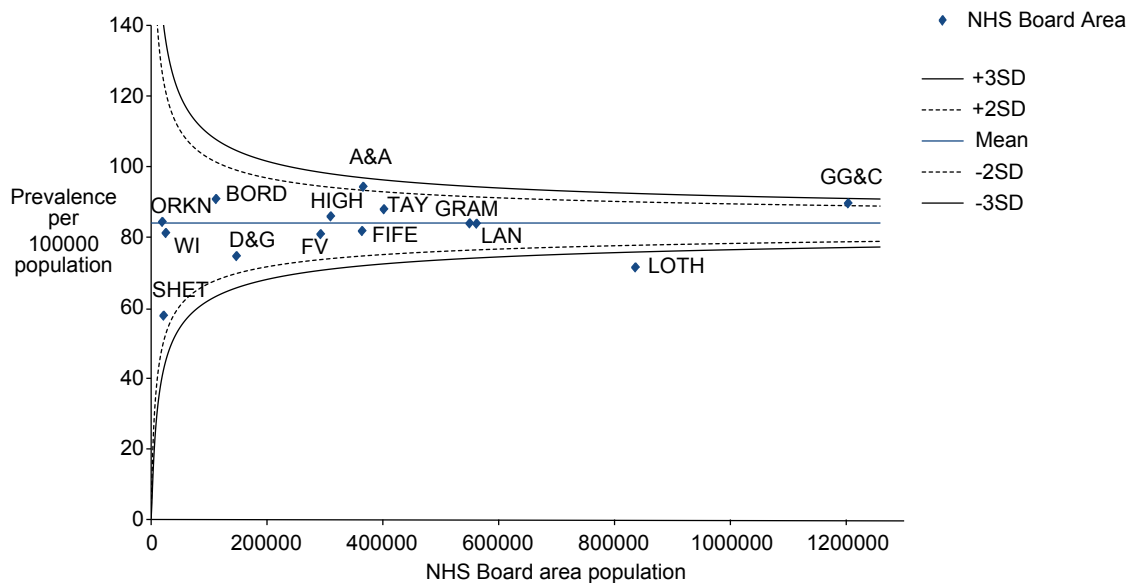
As a result the reported age standardised prevalence per 100000 population rate for each NHS Board of residence has now changed. The Scotland rate of 84 per 100000 remains unchanged.

The age standardised prevalence rate is the total number of residents expected to be on RRT on 31 December 2010 in a NHS Board area population, if the age structure of the Board area was the same as that of Scotland.

NHS Board areas with lower standardised prevalence rates have fewer residents receiving RRT on 31 December 2010, than would be expected for their resident population considering the age structure.

NHS Board areas with higher standardised prevalence rates have more residents receiving RRT on 31 December 2010, than would be expected from their resident population considering the age structure.

B3.7 Age standardised prevalence of patients receiving RRT on 31 December 2010 by NHS Board area of residence ^R



R B3.7 was revised in March 2012 to correct an error in the age-standardisation methodology. As a result the prevalence rate for each NHS Board areas of residence has now changed. Previously, BORD and TAY were reported to lie out with +2SD of the mean, they now lie within the funnel. A&A and GG&C were reported to lie out with +3SD of the mean, and are shown to lie close to +2SD, SHET was reported to lie outwith -3SD and is now within the funnel. LOTH still remain out with -3SD.