

SECTION J ADEQUACY OF HAEMODIALYSIS

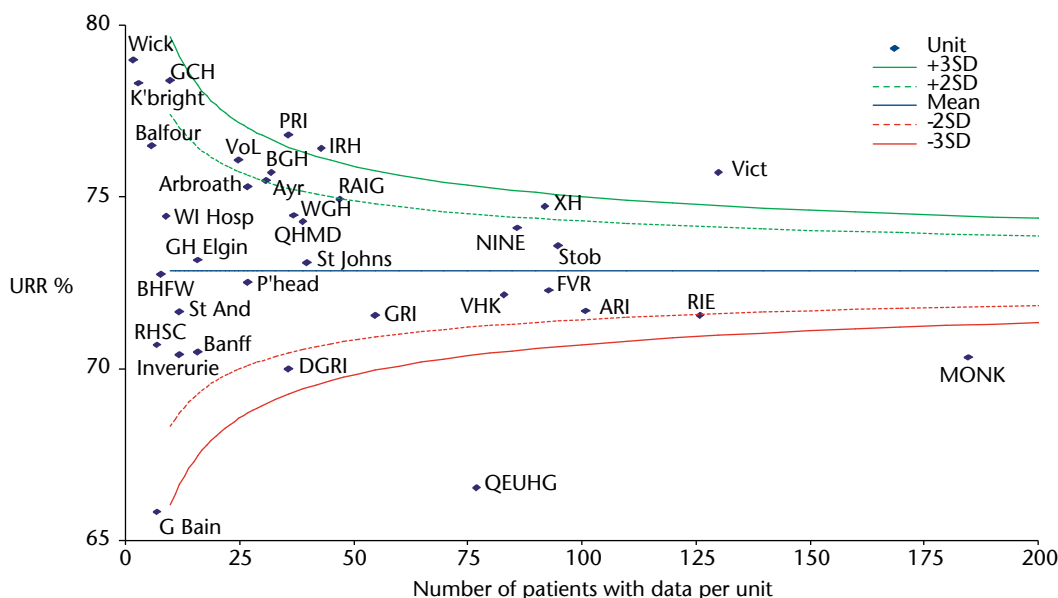
The quality of haemodialysis treatment for ERF can be assessed by measuring the urea reduction ratio (URR). The UKRA guideline for adult patients on three times per week HD is to achieve a URR consistently >65%.

The URR audit was performed in May 2015; all patients in Scotland receiving hospital or home haemodialysis on 01 May 2015 were included in the audit. There were 1762 results from 1906 patients (92.4%).

Although most patients continue to receive haemodialysis three times per week, it is clear that a large proportion of home and a small proportion of hospital haemodialysis patients are receiving more frequent sessions.

Of the 1783 patients with information on dialysis frequency 1715 continue to have three times per week and 56 patients received a greater frequency (30 hospital HD (1.6%) and 26 home HD (44.4%)). 12 patients were receiving twice weekly dialysis. For those patients receiving greater than three times per week URR may not reflect adequately the quality of dialysis and for these patients standardised Kt/V is preferable. We therefore have limited URR comparison to those receiving three times weekly HD in Figures J1 and J2 and used data from the census to calculate standardised Kt/V for all those with sufficient data.

J1 Mean achieved URR in Hospital HD patients on thrice weekly treatment in May 2015 by dialysis unit



1668 patients (87.5%) had adequate data to calculate standardised Kt/V (URR, dialysis frequency, dialysis treatment time and access used). More information about this method of calculating Kt/V is available on the SRR website.

<http://www.srr.scot.nhs.uk/Projects/Projects1.html#adequ>

J2 Number of haemodialysis patients, median URR, median stdKt/V and achievement of audit standard by renal unit May 2015											
	ARI	XH	DGRI	GLAS	MONK	NINE	RAIG	RHSC*	RIE	VHK	Scotland
Number of patients on HD	220	144	55	609	191	181	78	9	269	150	1906
Number of patients with missing data	16	17	5	58	6	20	4	1	12	4	144
% patients with URR >65%**	86	90	78	84	82	91	94	71	90	90	87
Upper quartile**	76	81	79	78	75	80	78	77	76	76	78
Median URR**	73	75	74	74	71	75	76	73	74	74	74
Lower quartile**	69	71	67	69	67	70	73	66	70	70	69
% patients with data for stdKt/V***	90	85	82	83	94	85	92	89	91	92	88
Median stdKt/V***	2.13	2.24	2.18	2.17	2.08	2.20	2.22	2.18	2.15	2.12	2.15

* Data for RHSC. The standards set for adult patients are not applicable to children; data are given for reference purposes only.

** Analysis limited to those with sufficient data and confirmed as receiving thrice-weekly haemodialysis (n = 1662).

*** Standardised Kt/V calculation only possible for patients with URR, dialysis frequency, dialysis treatment time and access used (n = 1668).