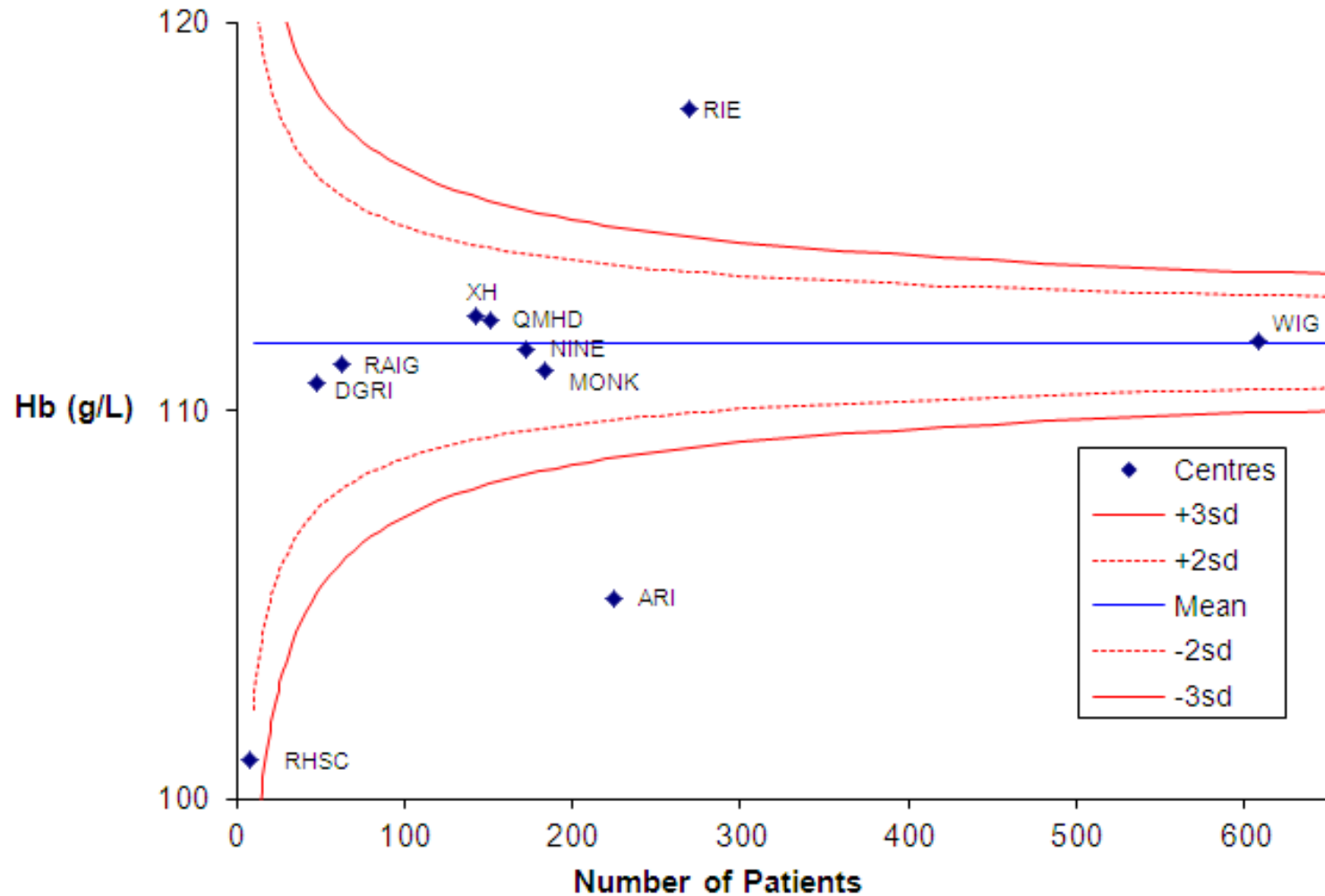


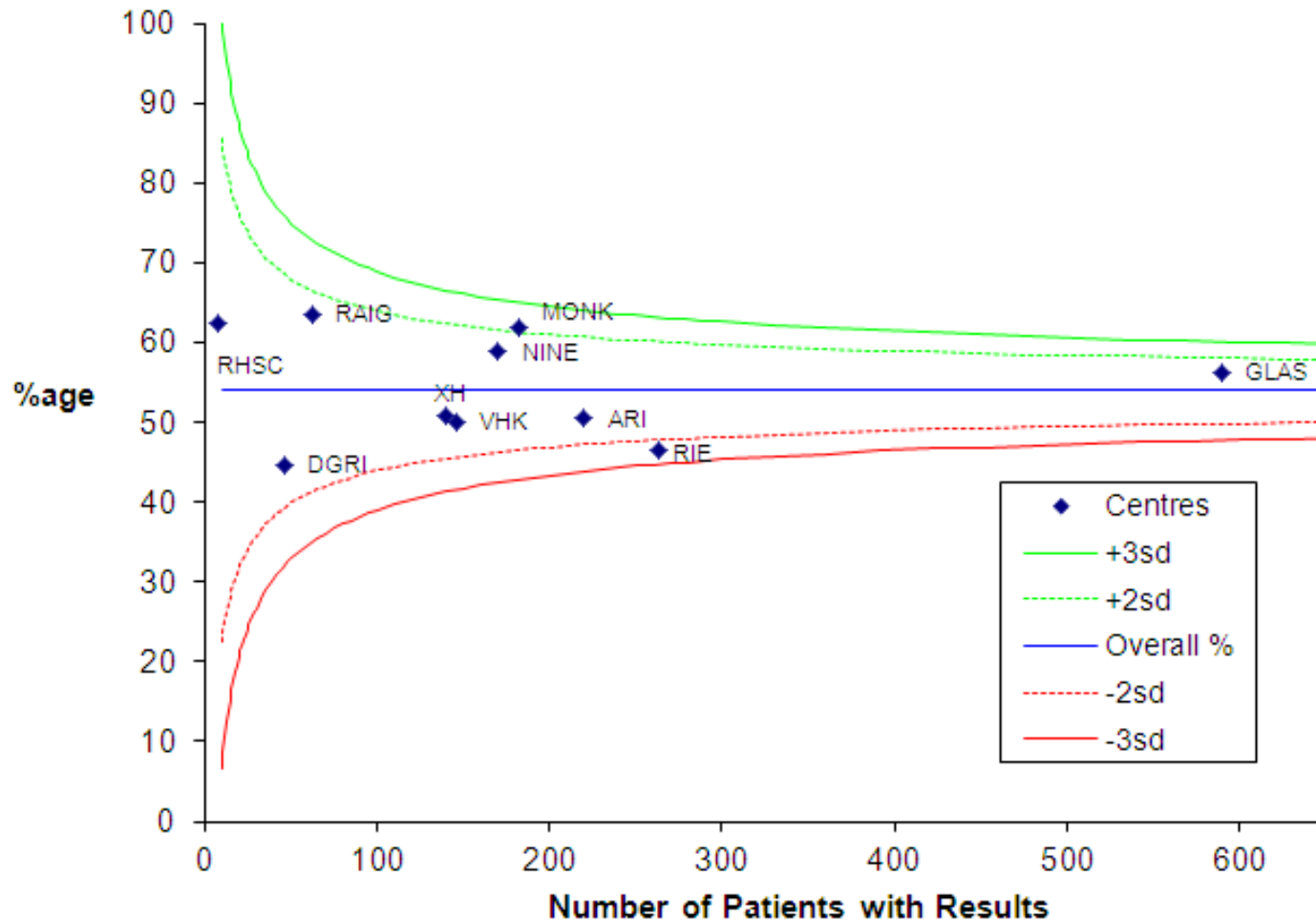


# Mean haemoglobin by unit November 2013 HD patients





# Percentage HD patients meeting target haemoglobin 100 - 120 g/L November 2013





# Haemoglobin data and achievement of standards November 2013

|   | ARI         | XH          | DGRI        | GLAS        | MONK        | NINE        | RAIG        | RHSC*       | RIE         | VHK         | Scotland    |
|---|-------------|-------------|-------------|-------------|-------------|-------------|-------------|-------------|-------------|-------------|-------------|
| <b>Number of patients</b>                   | 225         | 142         | 48          | 608         | 184         | 173         | 63          | 8           | 269         | 151         | 1873        |
| <b>Missing data or transfused</b>           | 5           | 2           | 1           | 19          | 1           | 3           | 0           | 0           | 6           | 5           | 43          |
| <b>% patients with Hb data</b>              | 98          | 99          | 98          | 97          | 99          | 98          | 100         | 100         | 98          | 97          | 100         |
| <b>% patients Hb ≥ 100 g/L</b>              | 64          | 78          | 75          | 79          | 84          | 81          | 84          | 63          | 88          | 77          | 79          |
| <b>% patients with Hb<br/>100 - 120 g/L</b> | 50          | 51          | 45          | 56          | 62          | 59          | 63          | 63          | 46          | 50          | 54          |
| <b>% patients with Hb &gt; 120 g/L</b>      | 15          | 29          | 32          | 26          | 23          | 24          | 21          | 0           | 44          | 30          | 27          |
| <b>Upper quartile</b>                       | 114         | 122         | 122         | 121         | 119         | 120         | 119         | 112         | 128         | 122         | 121         |
| <b>Median Hb g/L</b>                        | 106         | 113         | 113         | 112         | 111         | 112         | 111         | 104         | 119         | 115         | 113         |
| <b>Lower quartile</b>                       | 96          | 103         | 102         | 103         | 104         | 102         | 106         | 91          | 110         | 105         | 103         |
| <b>Range g/L</b>                            | 63 -<br>144 | 63 -<br>154 | 75 -<br>144 | 54 -<br>161 | 72 -<br>144 | 79 -<br>143 | 81 -<br>141 | 77 -<br>119 | 62 -<br>156 | 63 -<br>141 | 54 -<br>161 |

\* The standards set for adults are not applicable to children