

## Section H VASCULAR ACCESS FOR HAEMODIALYSIS

Details of vascular access used for haemodialysis for all hospital and home haemodialysis patients were collected during the annual SRR census in the first week of May 2011 or as soon as possible thereafter. Vascular access details were available for 1810 patients, 96.5% of the 1877 prevalent HD patients on 02 May 2011.

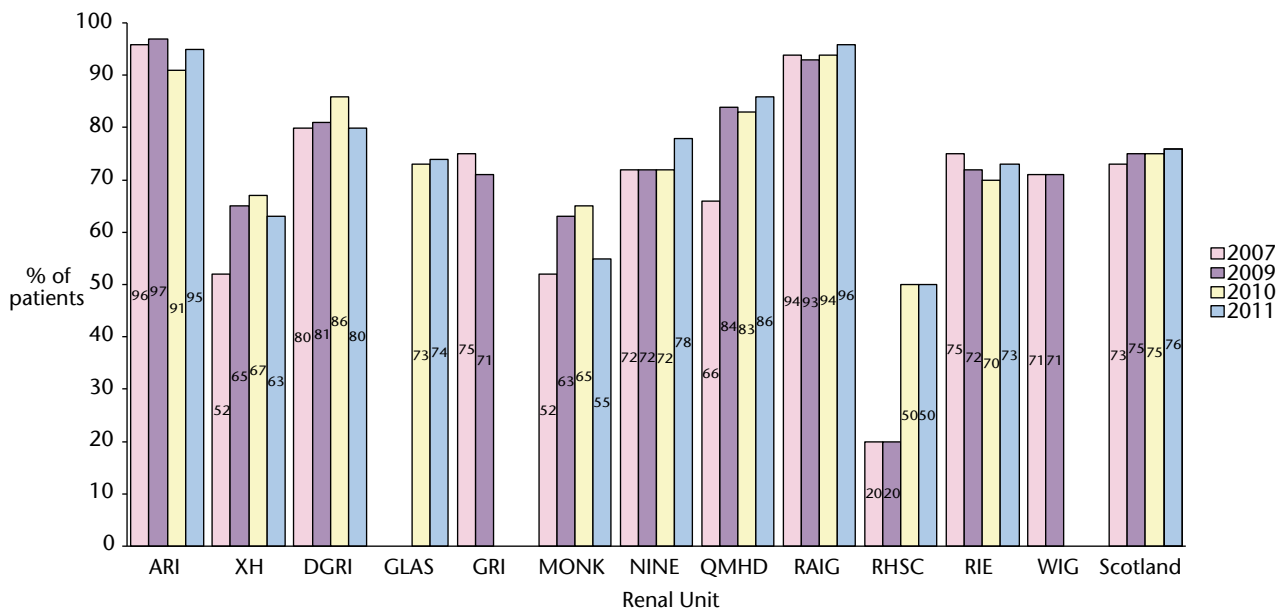
H1 Types of vascular access for haemodialysis patients May 2011		
Type of Access	Number	Percentage
Arteriovenous	1369	75.6
Fistula	1275	70.4
Graft	54	3.0
AV access – details not known	40	2.2
Catheter	441	24.4
Tunnelled	405	22.4
Non-tunnelled	36	2.0
<b>Total</b>	<b>1810</b>	<b>100</b>

Of the 1810 patients with data, 1369 (75.6%) patients were using arteriovenous (AV) access and 441 (24.4%) patients with central venous catheters (CVC). As in previous years, males were significantly more likely than females to have AV access (79% v 70%; Chi square  $p < 0.001$ ). Age did not affect rates of AV access.

There were significant differences between diagnosis groups (Chi square  $p < 0.01$ ); patients with glomerulonephritis were most likely to have AV access (81%) and those with diabetic nephropathy least likely (71%).

Only 48% of patients who had started RRT up to 180 days before data collection had AV access, compared with 79% of those who started RRT more than 360 days before (Chi square  $p < 0.001$ ). However, those who had started 181-360 days prior to data collection were not significantly less likely to have AV access than those who had started earlier (74% v 79%; Chi square  $p > 0.05$ ).

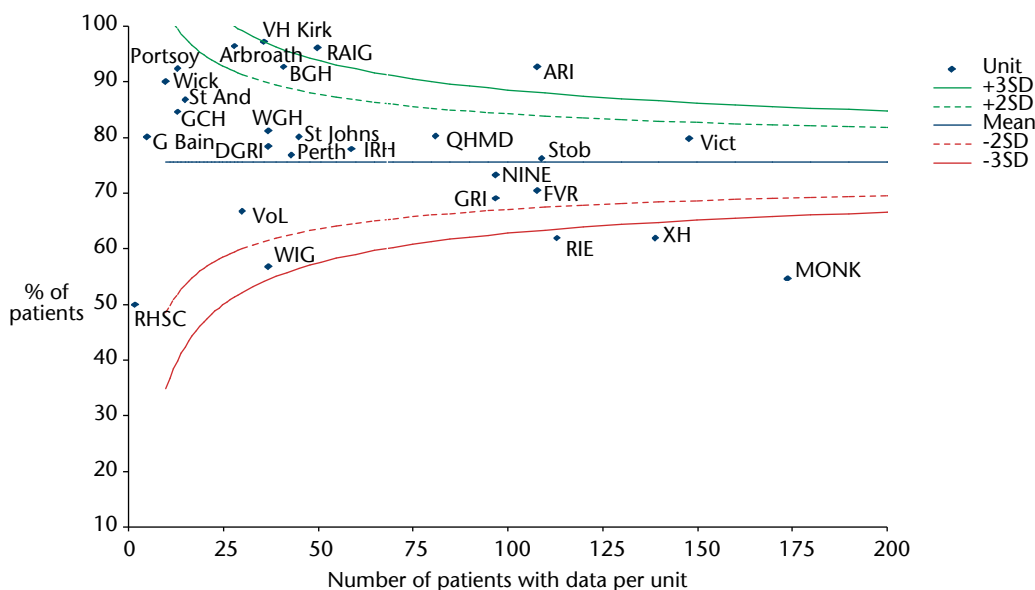
**H2 Percentage of haemodialysis patients with AV access by renal unit: Census results 2007, 2009, 2010 and May 2011**



The percentage of HD patients (with data) using AV access ranged from 55% to 100% in the adult units. H2 shows the percentage AV access (in patients with data submitted) by parent unit from each census 2007 to 2011. GRI and WIG units merged in 2010, data from those units are shown separately for 2007 and 2009 and amalgamated thereafter.

H3 shows the percentage of AV access in 2011 in each unit, with all satellite and main units shown individually.

**H3 Percentage of patients with AV access by dialysis unit May 2011**



Balfour, GH Elgin, Inverurie, Peterhead, BHFV, WI all had 100% prevalence of AV access and are not shown on the funnel plot to enhance clarity.