

G6 Vascular access for haemodialysis 2007

The best form of vascular access is a native vessel arteriovenous fistula (AVF). Central venous catheters (CVC) are associated with a higher risk of bacteraemia and with a higher mortality. A census was conducted of all hospital and home haemodialysis patients on the first week of April 2007.

The survey form is on the SRR website at:

http://www.srr.scot.nhs.uk/About/SRR_census_day_HD_form_2007.pdf

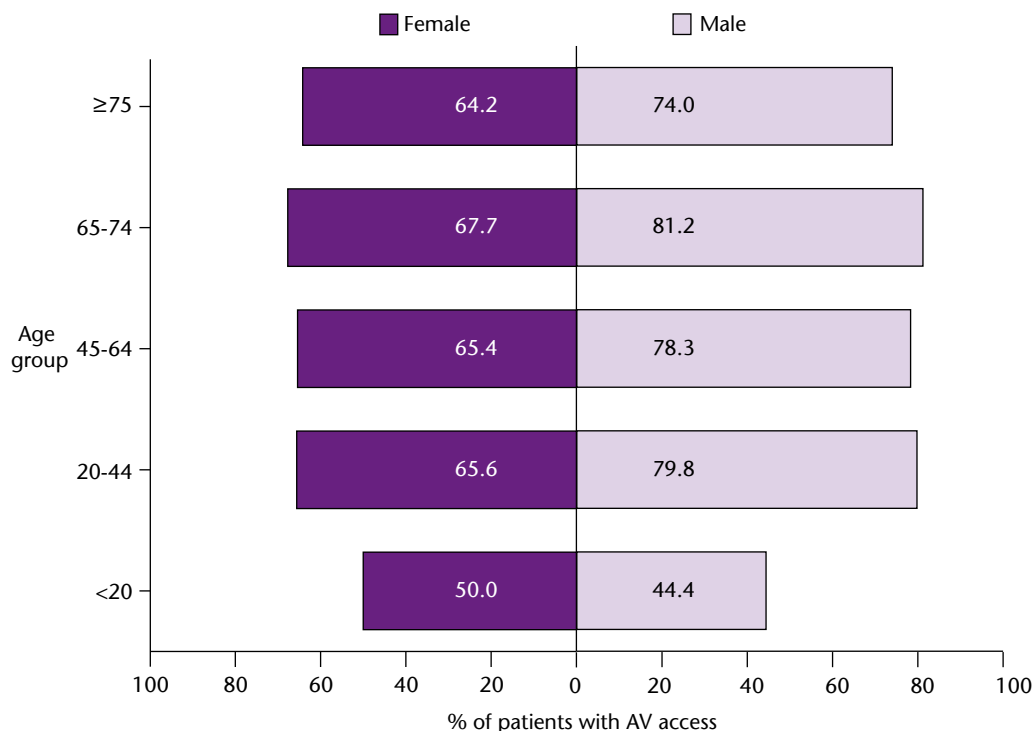
The number of prevalent patients on home or hospital HD on 2 April 2007 was 1708. Details of vascular access were available for 1609 patients (94%).

Median age was 64 years.

| G6.1 Types of vascular access for haemodialysis patients in Spring 2007 | | |
|-------------------------------------------------------------------------|-------------|------------|
| Type of access | Number | Percentage |
| Arteriovenous (AV) of which | 1175 | 73 |
| Fistula | 1104 | |
| Graft | 57 | |
| Vein Loop | 8 | |
| Needled (details unknown) | 6 | |
| CV Catheters of which | 434 | 27 |
| Tunnelled | 419 | |
| Non-tunnelled | 15 | |
| Total | 1609 | 100 |

In April 2006 76% of patients on haemodialysis in Scotland had AV access, there has been no improvement.

G6.2 Determinants of AV access



Males are more likely to have AV access, there was no relationship with age.

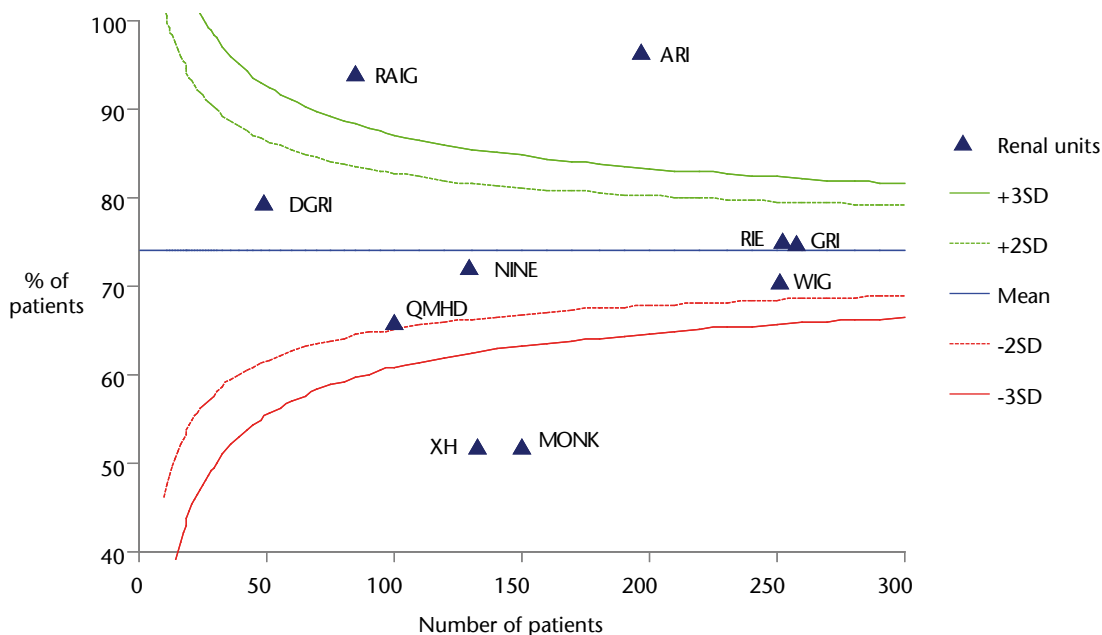
When the association with PRD group was examined, only diabetes appeared to have an impact, patients with diabetic nephropathy were less likely to have AV access.

G6.3 Percentage of patients with AV access in Spring 2007, by time period of starting RRT

| Time period of starting RRT | Without AV access | With AV access | Total number of patients | % with AV access |
|-----------------------------|-------------------|----------------|--------------------------|------------------|
| Pre 2004 | 157 | 594 | 751 | 79% |
| 2004 | 43 | 146 | 189 | 77% |
| 2005 | 53 | 193 | 246 | 78% |
| 2006 Q1 | 25 | 54 | 79 | 68% |
| 2006 Q2 | 38 | 40 | 78 | 51% |
| 2006 Q3 | 27 | 56 | 83 | 67% |
| 2006 Q4 | 34 | 59 | 93 | 63% |
| 2007 Q1 | 57 | 33 | 90 | 37% |
| Total | 434 | 1174 | 1608 | 73% |

Note: 2007 Q1 means the first quarter of 2007, etc.

G6.4 Percentage of patients with AV access in Spring 2007 by renal unit



G6.5 AV access in Spring 2007 by renal unit

| Renal unit | Number of patients | Percentage with AV access |
|-----------------|--------------------|---------------------------|
| ARI | 197 | 96 |
| XH | 133 | 52 |
| DGRI | 49 | 80 |
| GRI | 258 | 75 |
| MONK | 150 | 52 |
| NINE | 129 | 72 |
| QMHD | 100 | 66 |
| RAIG | 85 | 94 |
| RHSC | 5 | 20 |
| RIE | 252 | 75 |
| WIG | 251 | 71 |
| Scotland | 1609 | 73 |

Raigmore and Aberdeen are above the line showing 3SD above the mean (P<0.01) while Crosshouse and Monkland lie below the line for 3SD below the mean (p<0.01).